

**Open reduction and internal fixation (ORIF) Operative technique:**



Figure(2): Floating position for Combined approach: reversed L-shaped approach + anterior-lateral approach.[10]

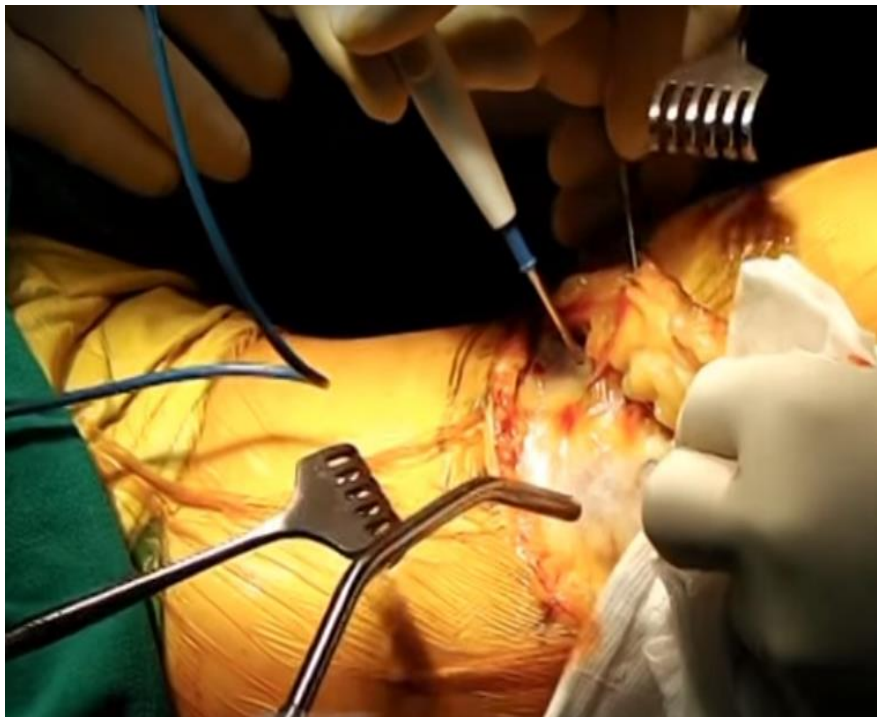


Figure (3) : skin incision of postero meial approach

**Fragment Specific Fixation for Tibial Plateau Fractures with particular reference to arthroscopic assisted surgery.**

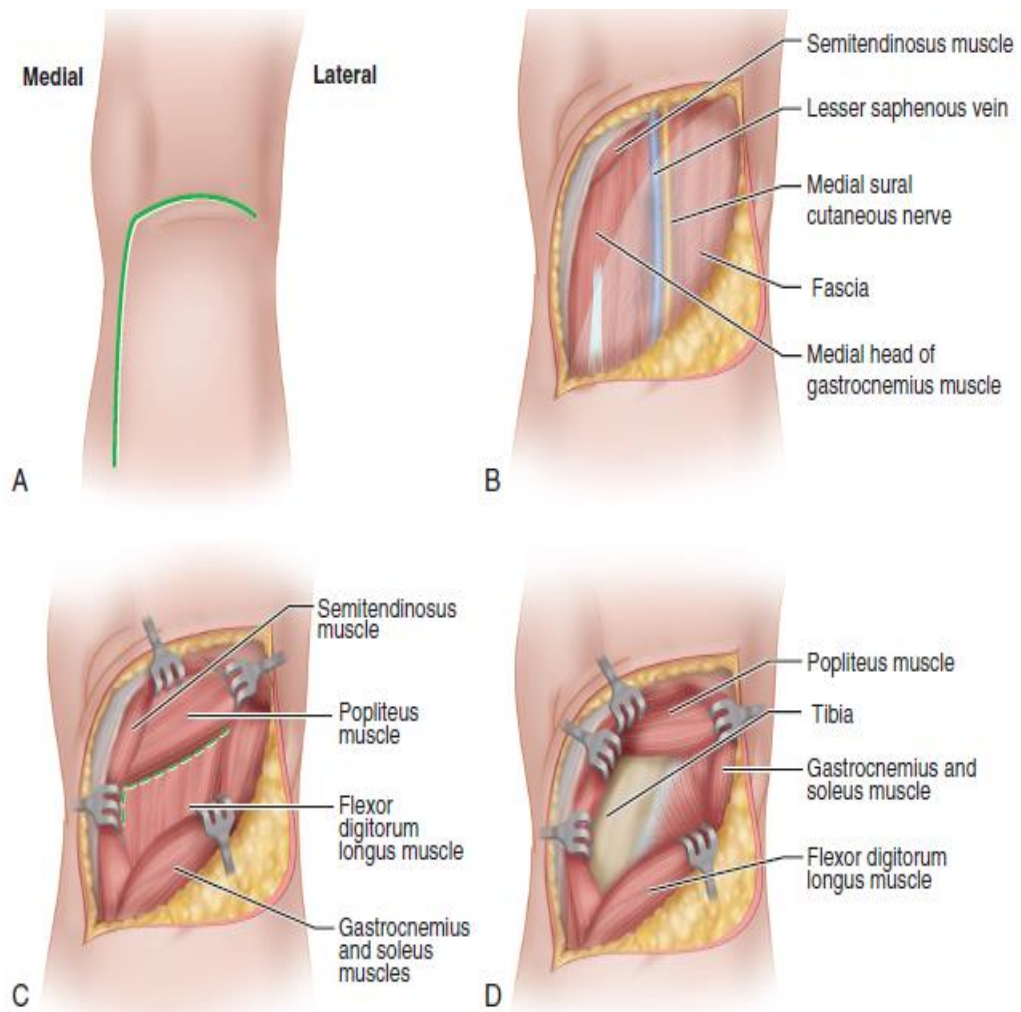


Figure (4) : Banks and Laufman approach

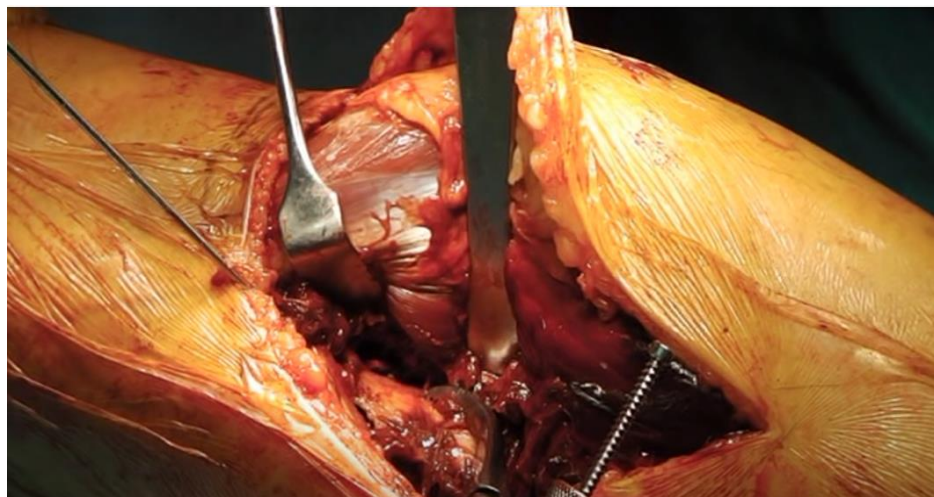


Figure (5): Reduction & fixation of posterior column.

**Fragment Specific Fixation for Tibial Plateau Fractures with particular reference to arthroscopic assisted surgery.**

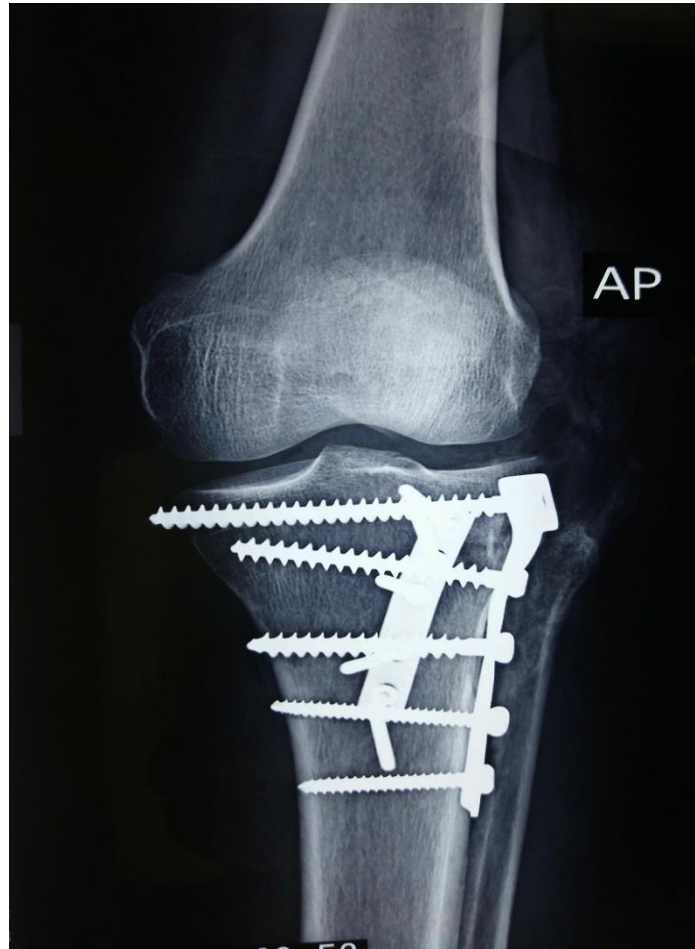


Figure (6): x ray showing oblique position of posterior plate



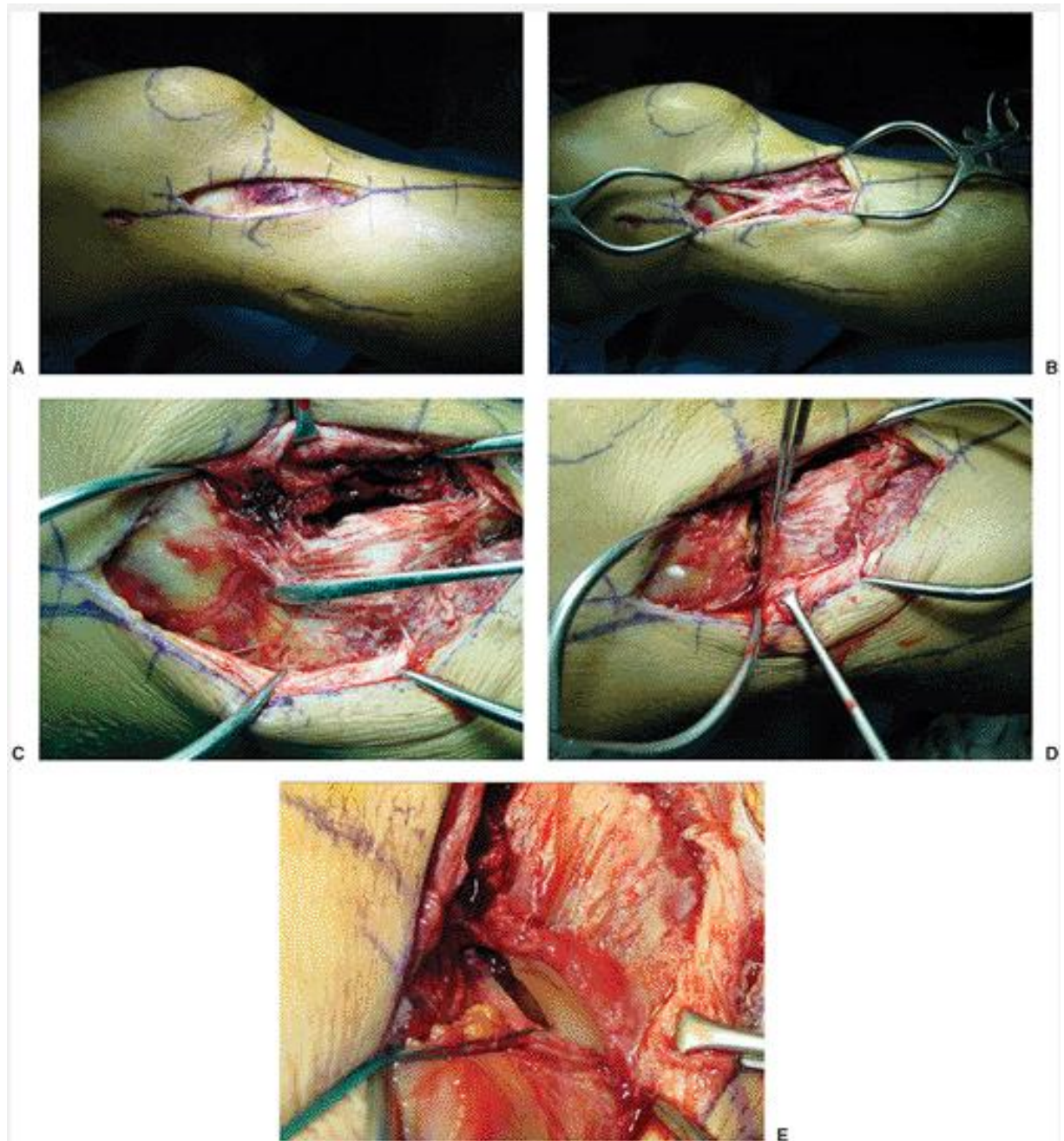


Figure (7): conventional anterolateral approach for tibial plateau.