

Arthroscopic assisted reduction and internal fixation (ARIF):



Fig.(8) Arthroscopic lavage and evacuation of hematoma and loose particles



Figure (9): lateral incision in ARIF.

**Fragment Specific Fixation for Tibial Plateau Fractures
with particular reference to arthroscopic assisted surgery.**



Figure (10): radiological assessment of the tamp position intraoperatively to elevate posterolateral fragment.

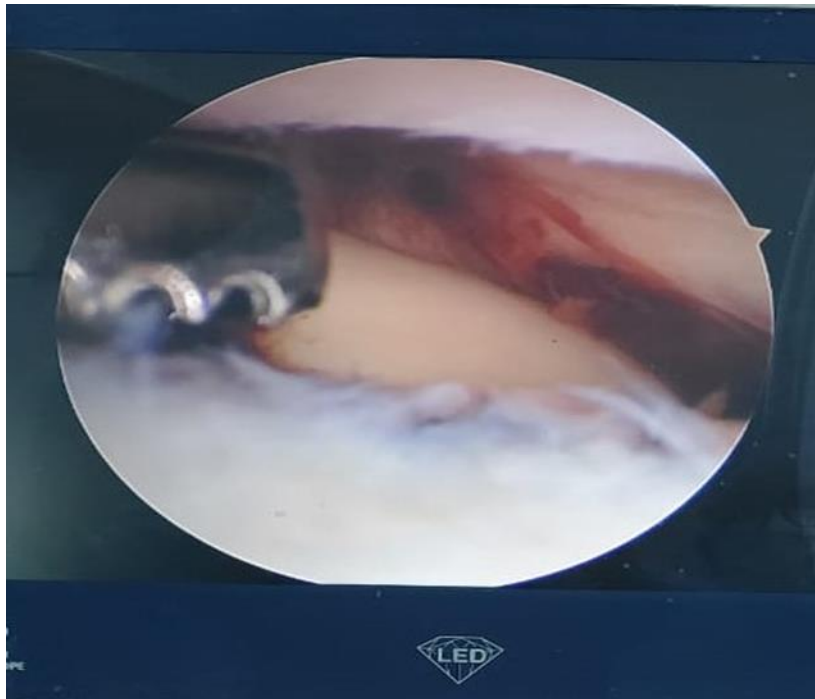


Figure (11): arthroscopic view of depressed posterolateral fragment

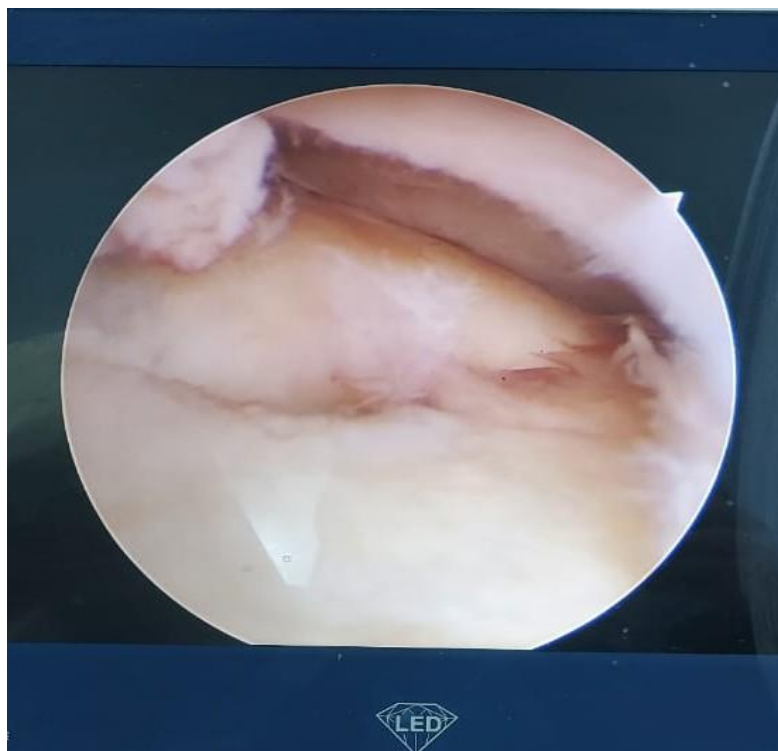


Figure (12): arthroscopic view of the elevated posterolateral fragment after reduction

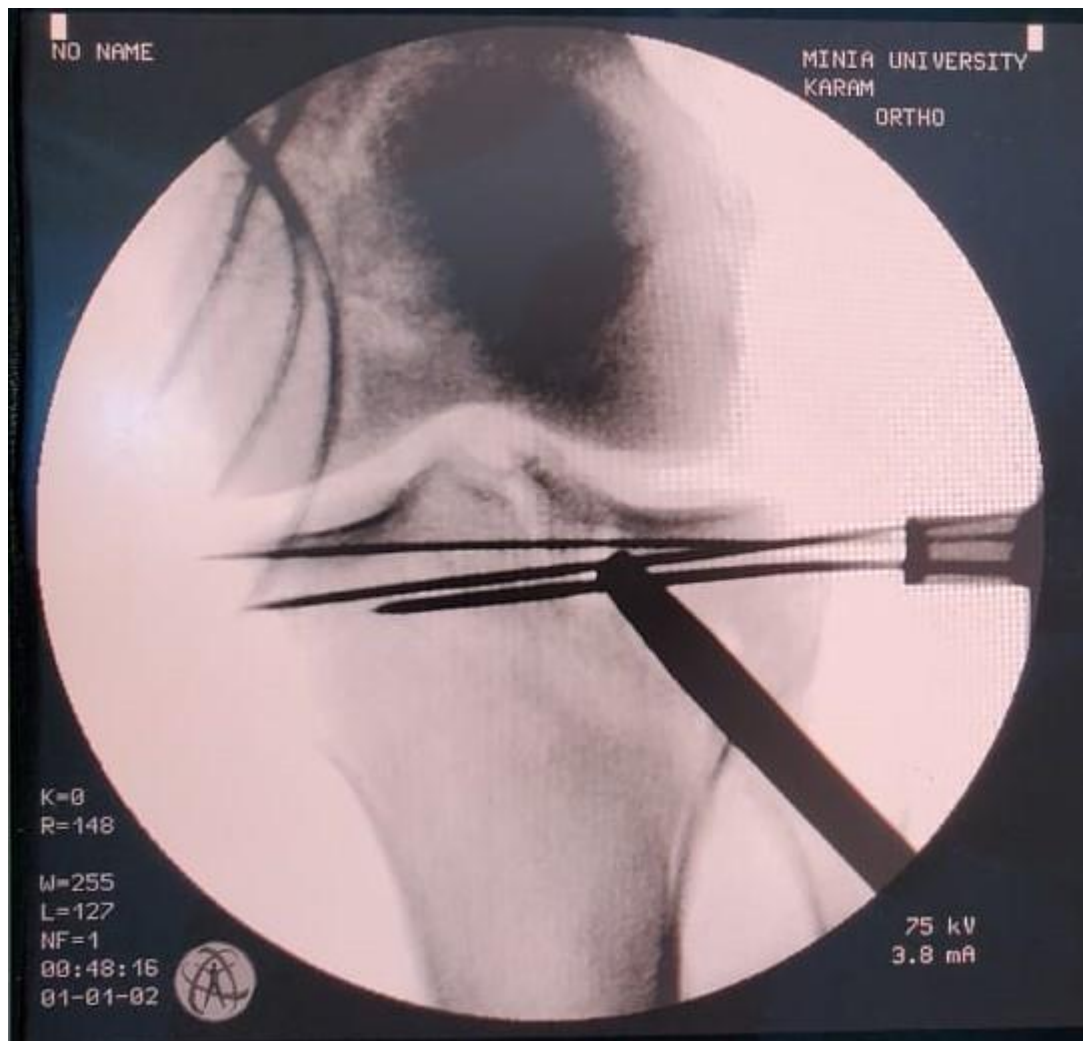
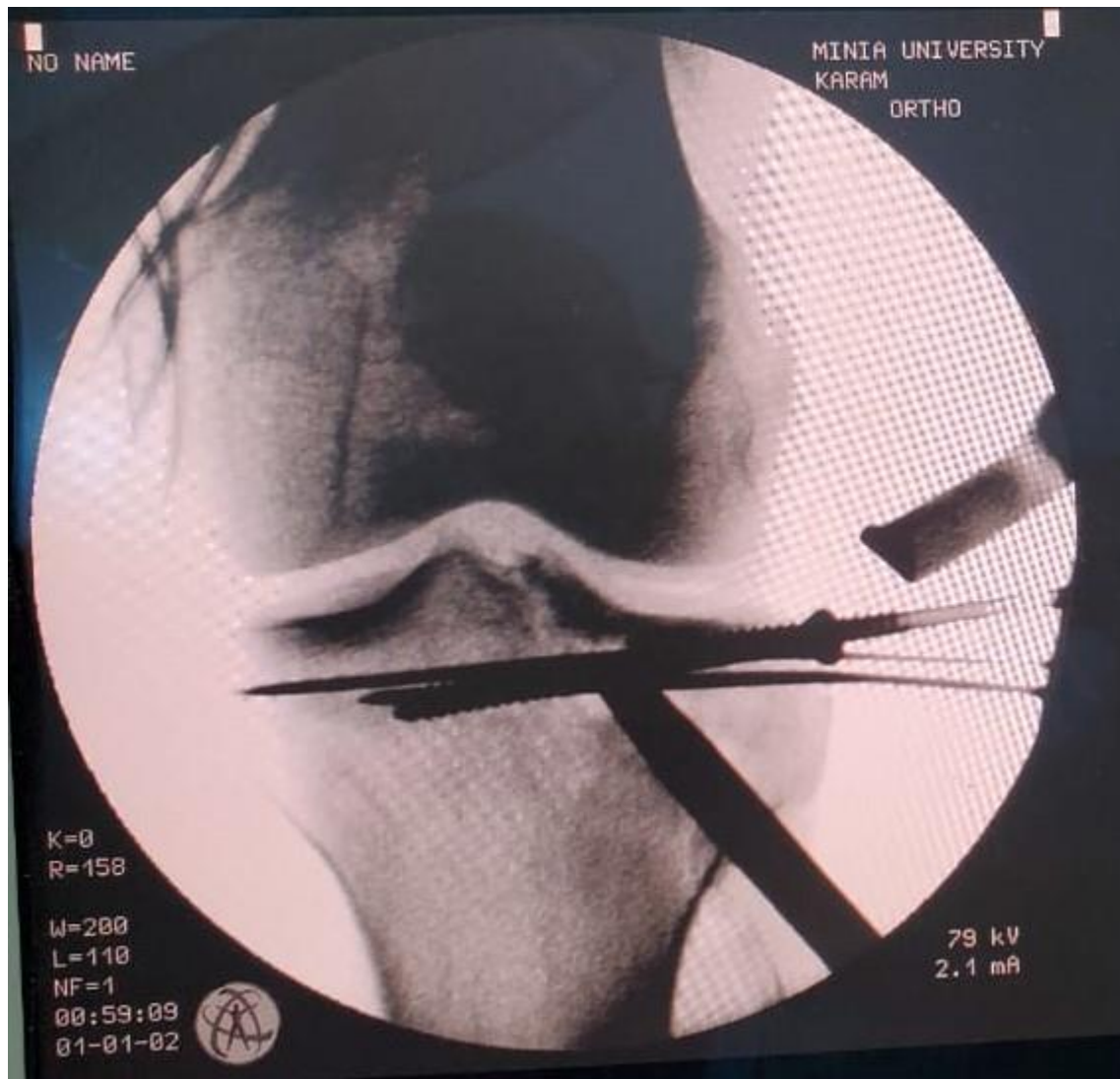


Figure (13): K-wire inserted after reduction of articular surface



Fig(14). C-arm radiographs are performed as a last step to validate proper anatomic reduction and fixation and to check the length and trajectory of the screws..



Figure (15): Intra operative C- arm images A-P and LAT. Views showing final fixation.

Fragment Specific Fixation for Tibial Plateau Fractures with particular reference to arthroscopic assisted surgery.